

NE
2210
P41
A26

CORNELL
UNIVERSITY
LIBRARY



GIFT OF

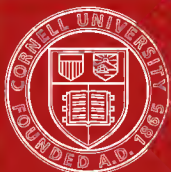
R. W. Brown

Cornell University Library
NE2210.P41 A26

San Francisco.



3 1924 032 508 552
olin



Cornell University
Library

The original of this book is in
the Cornell University Library.

There are no known copyright restrictions in
the United States on the use of the text.

THE CITIES SERIES

Frontispiece—on Cover

THE CITY FROM THE HILLS

S A N
FRANCISCO
THE CITY OF THE
GOLDEN GATE
by JOSEPH PENNELL

BEING TWENTY-FIVE RE-
PRODUCTIONS IN PHOTO-
GRAVURE FROM ETCH-
INGS & DRAWINGS

BOSTON
LE ROY PHILLIPS
SS

Pillans & Wilson, Printers, Edinburgh

THE LIST OF CONTENTS

Frontispiece—on Cover

THE CITY FROM THE HILLS

- I MARKET STREET
- II FROM THE BAY
- III THE TWIN PEAKS FROM MARKET STREET
- IV RUINS
- V CHINA TOWN
- VI A HILL TOP
- VII FROM TELEGRAPH HILL
- VIII SING FAT AND SING CHONG
- IX RUSSIAN HILL
- X TELEGRAPH HILL
- XI ON THE BARBARY COAST
- XII SAN FRANCISCO FROM THE FAIRMONT
- XIII AFTERNOON : FOG COMING ON
- XIV ISLES OF THE BAY
- XV FROM STEVENSON'S HOUSE
- XVI AFTERNOON—SAN FRANCISCO
- XVII THE LAST OF OLD SAN FRANCISCO
- XVIII DOWN AND UP THE HILLS TO THE BAY
- XIX THE PLAYGROUND FROM CLIFF HOUSE
- XX CALIFORNIA STREET
- XXI KEARNY STREET
- XXII FROM THE BAY
- XXIII FROM MOUNT TAMALPAIS
- XXIV SACRAMENTO STREET

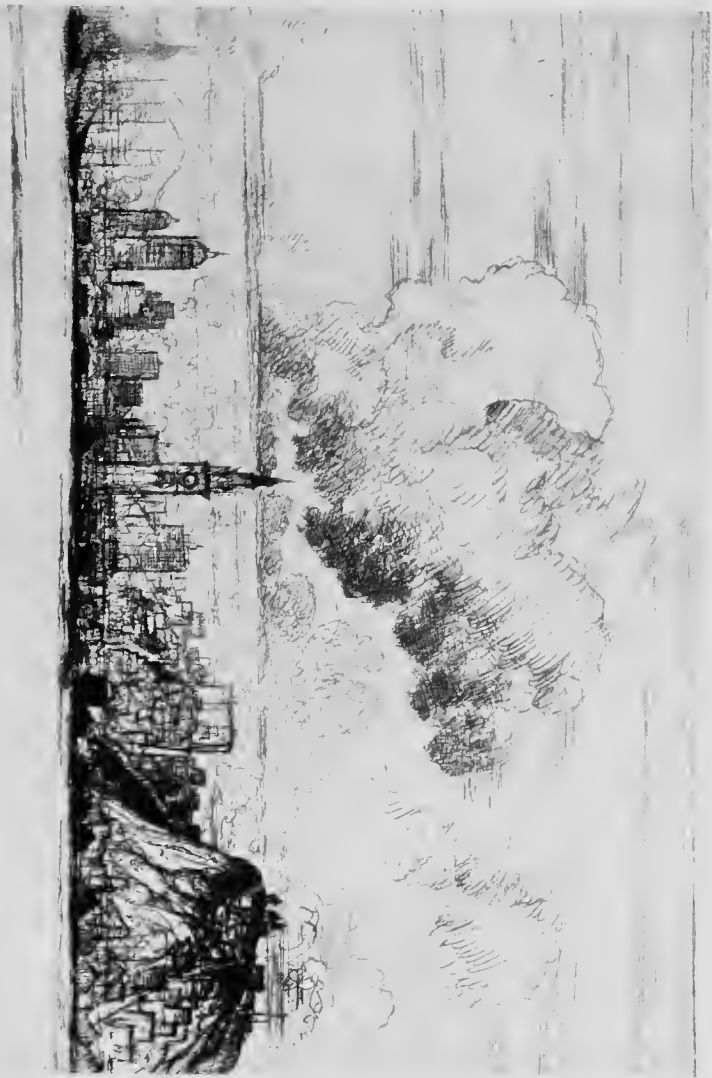
MARKET STREET

MARKET STREET IS THE MAIN ARTERY OF SAN FRANCISCO: EAST AND WEST, STRAIGHT ACROSS THE CITY IT RUNS. AT ITS FOOT IS THE CLOCK TOWER OF THE FERRY BUILDING—THE WATER GATE OF THE CITY—AND THE TERMINAL OF THE OVERLAND RAILWAY LINES. IN ITS WESTWARD COURSE IT COMBINES COMMERCIAL THOROUGHFARE, SHOPPING DISTRICT, AMUSEMENT CENTRE, AND BOULEVARD. ITS BROAD PAVEMENTS SWARM WITH A GAY THROG OF STROLLERS, SHOPPERS, AND BUSINESS MEN. THE STREET IS ALIVE WITH CARS AND AUTOMOBILES—BIG SIGHT-SEEING MOTORS MEGAPHONE THEIR WAY OUT TO THE CLIFF HOUSE AND GOLDEN GATE PARK. THE WHOLE IS A BRILLIANT PANORAMA OF LIFE, ENERGY, AND ENJOYMENT.



FROM THE BAY

FROM THE WATER SAN FRANCISCO IS IMPOSING. THE
IRREGULAR SKYLINE OF THE HILL, CITY IS ACCENTU-
ATED BY THE TALL BUILDINGS OF THE BUSINESS SEC-
TION—TOWER-LIKE EDIFICES OF GRACEFUL DESIGN.
HIGH TELEGRAPH HILL IS MADE PICTURESQUE BY THE
HOUSES OF THE ITALIAN QUARTER. BEYOND, ON NOB
HILL, BACK OF THE PALATIAL FAIRMONT HOTEL THAT
STILL GLEAMS IN WHITE STONE AS THE MOST CON-
SPICUOUS LANDMARK, WERE THE STATELY RESID-
ENCES OF THE WEALTHY ; WHICH, DESTROYED BY
THE FLAMES, ARE NOW BEING REPLACED BY CATHE-
DRAL CLUBS AND FINE APARTMENT HOUSES.



THE TWIN PEAKS FROM MARKET STREET

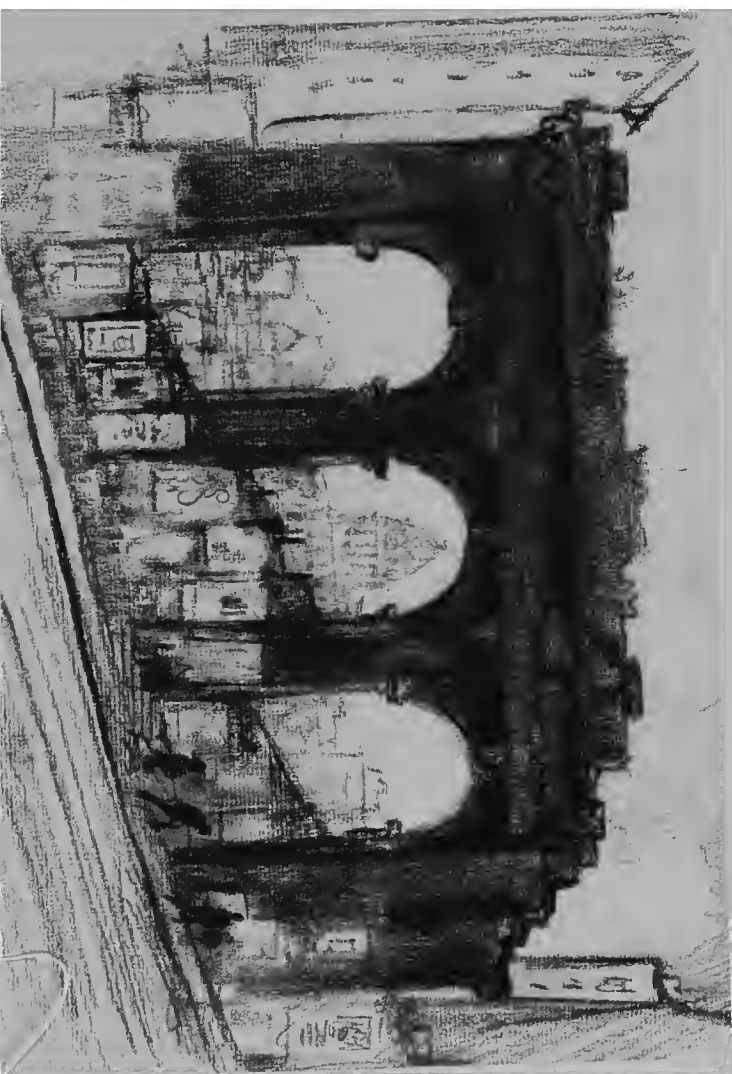
MARKET STREET IS THE BROADWAY OF SAN FRANCISCO. LOFTY BUILDINGS MAKE IT A CAÑON OF SHADE ON ONE SIDE, SUNSHINE ON THE OTHER. AT ITS EASTERN END RISES THE FERRY BUILDING, AND AT THE WEST ARE THE TWIN PEAKS THAT DOMINATE THE CITY FROM THIS QUARTER.



IV

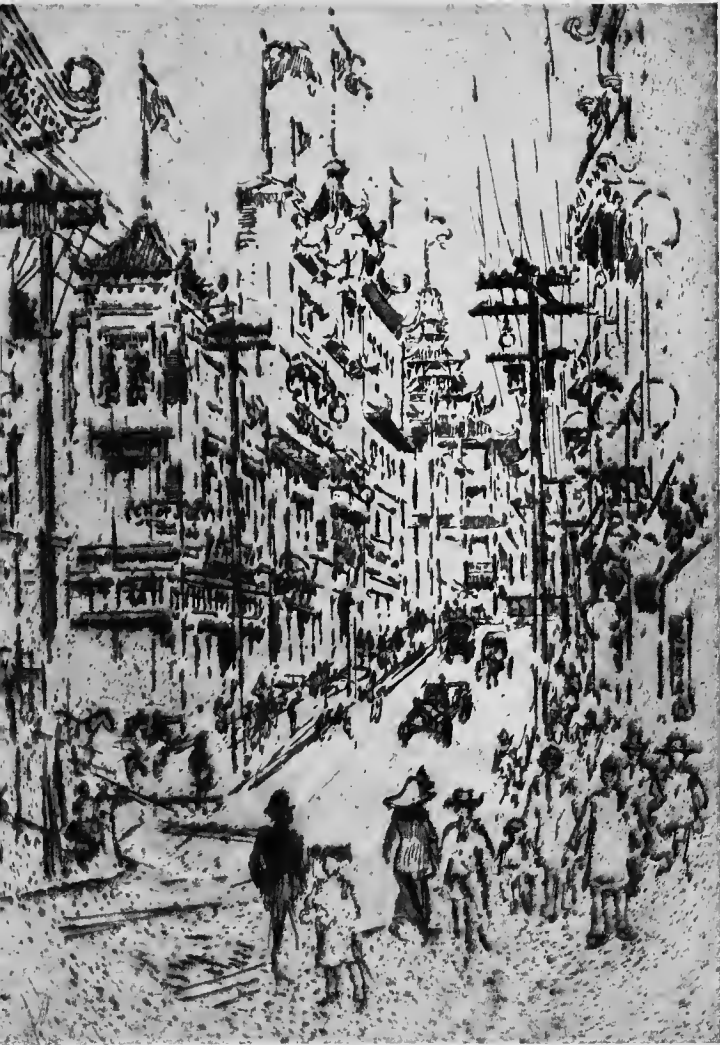
RUINS

THE GREAT FIRE OF SAN FRANCISCO THAT FOLLOWED THE EARTHQUAKE OF APRIL 1906, COVERED A VAST DISTRICT. THE STRUCTURES THAT HAVE RISEN PHOENIX-LIKE IN THAT AREA ARE ABSOLUTELY NEW. THE REBUILDING OF THIS BURNED SECTION IS ONE OF THE WORLD'S MARVELS—A MONUMENT OF COURAGE, ENERGY, AND ACHIEVEMENT. YET THERE STILL REMAIN SOME REMINDERS OF THE EPOCHAL DISASTER IN THE RUINED MASONRY AND OCCASIONAL UNBUILT SPACES.



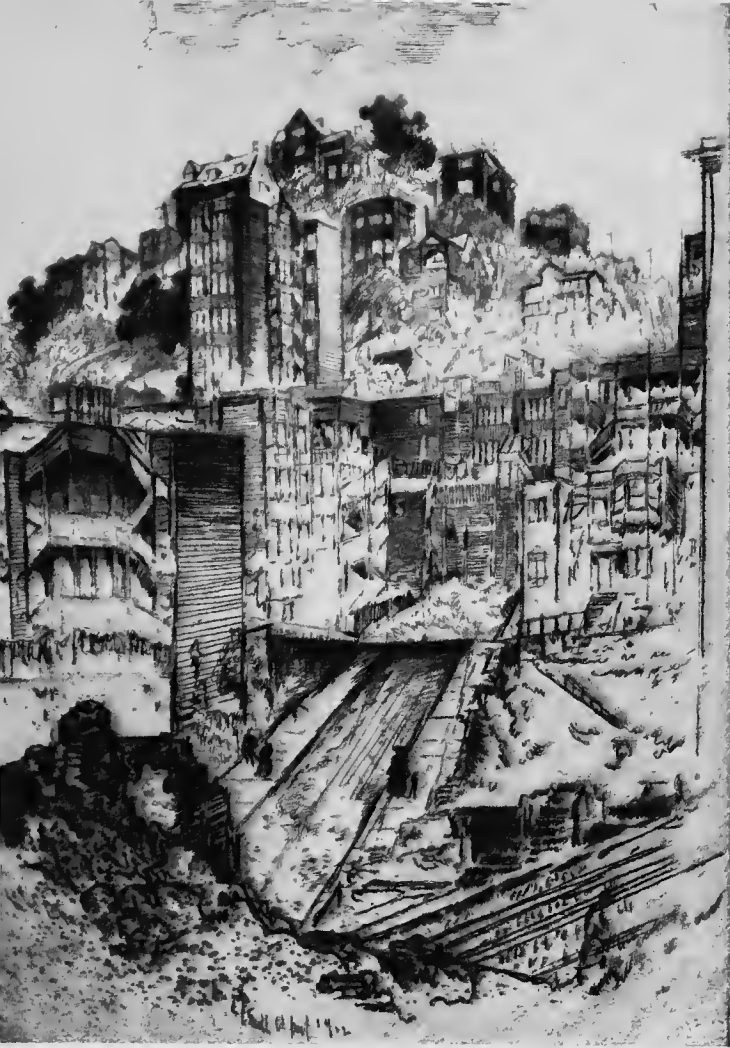
CHINATOWN

IN THE CHINAMAN CENTRES GREATER INTEREST AND GREATER MYSTERY THAN IN ANY OTHER FOREIGNER OF COSMOPOLITAN SAN FRANCISCO. HE OCCUPIES A CITY WITHIN A CITY. THE POPULATION OF CHINATOWN HAS BEEN VARIOUSLY ESTIMATED AT FROM FIFTEEN THOUSAND TO TWENTY-FIVE THOUSAND. IN THE RESTORATION WHICH FOLLOWED THE DISASTER OF 1906, THE ARCHITECTS ENDEAVOURED TO UNITE CHINESE STYLE AND AMERICAN UTILITY. MANY DEPLORE THE PASSING OF THE OLD QUARTER WITH ITS WEIRD FASCINATION. YET THE GLORY OF CHINATOWN HAS NOT ALTOGETHER DEPARTED; THE BAZAARS, THE TEMPLES, THE VIVID COSTUMES, AND THE DISTINCTIVE SHOPS STILL CARRY MORE THAN HINTS OF ORIENTAL CIVILISATION.



A HILLTOP

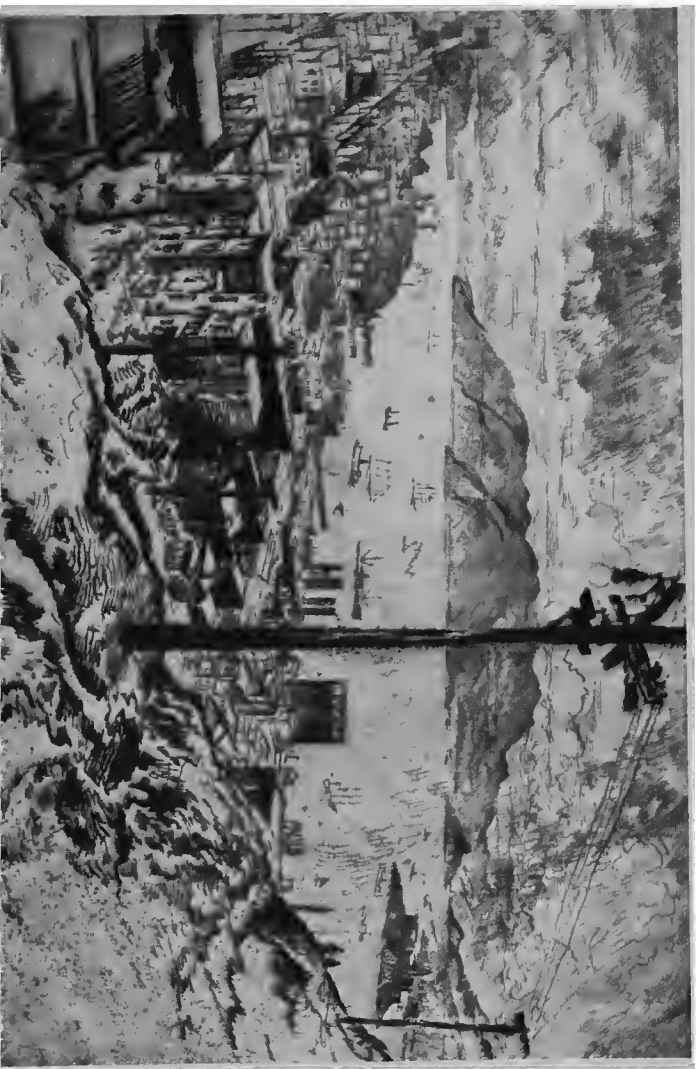
SAN FRANCISCO IS DOMINATED BY HILLTOPS. PILING UP IMPRESSIVELY, THEY PRESENT AN ALMOST SPECTACULAR EFFECT. THE BUILDINGS ON THE SIDES AND SUMMITS SEEM MONUMENTAL FROM THE LOWER LEVELS, AND DISTANCE LENDS TO THE ILLUSION THE ASPECT OF MEDIEVAL BATTLEMENTS.



VII

FROM TELEGRAPH HILL

TELEGRAPH HILL—ONCE THE LOCAL SHANTY TOWN—
IS THE ITALIAN QUARTER OF SAN FRANCISCO. “THE
SECRET OF TELEGRAPH HILL,” ONE OF BRET HARTE’S
SHORT STORIES, HAS BROUGHT THE LOCALITY TO THE
ATTENTION OF HIS READERS. IT FRONTS THE BAY
AND COMMANDS A MAGNIFICENT VIEW OF THE GOLDEN
GATE AS IT OPENS OUT ON THE MYSTERIOUS PACIFIC.



SING FAT AND SING CHONG

SING FAT AND SING CHONG ARE CONSPICUOUS BAZAARS OF CHINATOWN. IT IS COMMONLY SUPPOSED THAT THEY ARE NAMED FOR THEIR PROPRIETORS, BUT THE NAMES OF CHINESE BAZAARS HAVE SOME SIGNIFICANCE. SING FAT MEANS "LIVING RICHES"; SING CHONG, "LIVING PROSPERITY." INTERESTING HOURS OF LEISURELY SHOPPING MAY BE SPENT IN THE BAZAARS WHICH EXTEND FOR TWO BLOCKS ON GRANT AVENUE (FORMERLY DUPONT STREET) FROM CALIFORNIA TO CLAY STREETS. HERE CHINESE MERCHANTS LAY BEFORE THE APPRECIATIVE CUSTOMER TREASURES OF SILK, BROCADE, AND EMBROIDERY; OF CARVED IVORY AND TEAK, SANDAL, AND CAMPHOR WOOD; OF GOLD, SILVER JADE, BRONZE, CLOISONNÉ, LACQUER, AND PORCELAIN; BUT MINGLED WITH THESE IS MERCHANDISE FOR THE DEMANDS OF THE CASUAL CUSTOMER. MUCH THAT IS MERETRICIOUS AND THE GAUDY TRASH "MADE FOR THE AMERICAN TRADE" ARE ALSO FOUND.



IX

RUSSIAN HILL

RUSSIAN HILL IS THE HIGHEST POINT OF HILLY SAN FRANCISCO. IT RECEIVED ITS NAME FROM THE RUSSIAN BURIAL GROUND WHICH WAS ON ITS SLOPES DURING THE DAYS OF THE HUDSON'S BAY AGENCY. THE CLUSTER OF HOUSES SCATTERED ABOUT THE SUMMIT IS THE HOME OF SAN FRANCISCO'S ART COLONY. FROM THEIR TERRACED GARDENS AND THEIR STUDIO WINDOWS, NO GROUP OF PAINTERS COULD FIND MORE SATISFYING VISTAS, FOR THE WHOLE PANORAMA OF THE CITY AND BAY LIES BEFORE THEM.



TELEGRAPH HILL.

ITS EARLY USE AS A SIGNAL STATION TO INFORM THE TOWN BELOW WHEN A SHIP WAS ENTERING THE BAY GAVE TELEGRAPH HILL ITS NAME. IT IS A HEIGHT SO ABRUPT THAT ON THE SEWARD SIDE IT HAS A SHEER CLIFF OF ONE HUNDRED AND FIFTY FEET. SOME OF THE HILL WAS BLASTED AWAY FOR ITS ROCK, AND SHIPS DOCKING BELOW USED THE DÉBRIS FOR BALLAST. THE TOWN CLUSTERED NEAR THE BASE BEGAN TO CLIMB THE HILL. IT IS NOW A PART OF THE ITALIAN QUARTER. TO THE SIDES CLING PICTURESCUE COTTAGES AND ALMOST PERPENDICULAR GARDENS WHICH ONLY FOLK FROM THE MEDITERRANEAN COULD INHABIT AND CULTIVATE.



ON THE BARBARY COAST

BETWEEN TELEGRAPH HILL AND CHINATOWN LIES A DISTRICT CALLED THE BARBARY COAST. NO ONE KNOWS WHO COINED THE NAME. BY NIGHT IT IS DEVOTED TO THE DELIGHT OF THE DRIFTING POPULATION THAT HAUNTS THE WATERFRONT. HERE THE SAILORS OF THE WORLD DRINK AND DANCE WITH THE TAWDRY-CLAD, MADE-UP HABITUÉS. BY DAY THE REGION IS MORE DECOROUS: THE DANCE MUSIC NO LONGER BLARES PANDEMONIUM FROM BEHIND SWINGING DOORS, AND THE SHOPS CATER TO THE NEEDS OF THE INHABITANTS WHO DO NOT PARTICIPATE IN THE NIGHT LIFE.



SAN FRANCISCO FROM THE FAIRMONT

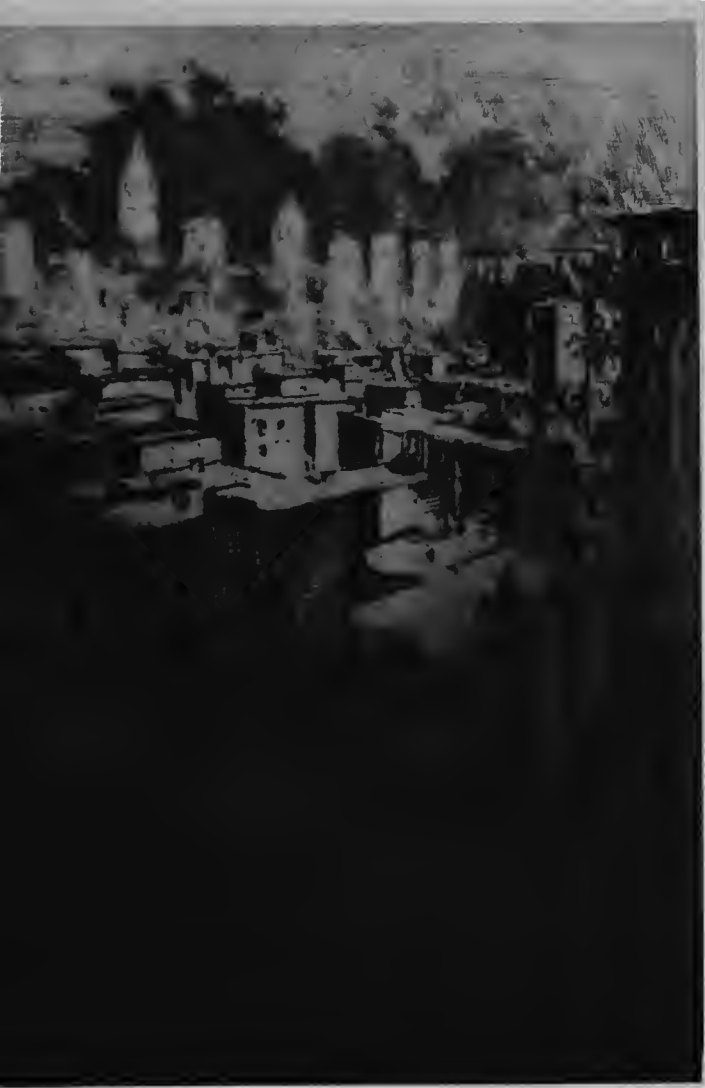
THE FAIRMONT HOTEL—COPY OF A EUROPEAN PALACE
—CROWNS NOB HILL. THE CITY, FALLING AWAY
FROM THIS ELEVATION, MAKES A PICTURE OF UN-
COMMON BRILLIANCY. THE DESTRUCTION OF THE
BUSINESS PORTION OF THE CITY BY THE FIRE OF 1906
HAS RESULTED IN THE MODERNISATION OF THE EN-
TIRE DOWN-TOWN DISTRICT. THE BUILDINGS GLEAM-
ING IN THE SUN HAVE A BRIGHTNESS, FRESHNESS,
AND CLEANLINESS NEVER SO NOTICEABLE AS WHEN
VIEWED FROM THE HILLS.



XIII

AFTERNOON : FOG COMING ON.

SAN FRANCISCO HAS AN AVERAGE OF THREE HUNDRED DAYS OF SUNSHINE EVERY YEAR. YET ONE OF THE CITY'S CHARACTERISTICS IS ITS FOGS,—BENEFICENT FOGS THAT TONE THE ATMOSPHERE. THE GOLDEN GATE ACTS AS A GREAT FUNNEL, DRAWING INTO THE BAY THE WINDS AND MISTS OF THE PACIFIC. THIS ENVELOPING FOG PRODUCES AN ILLUSION OF COLOUR AND MYSTERY DELIGHTFUL TO THE EYE. ONCE INSIDE THE BAY, AFTER A FRIENDLY CONFLICT WITH THE SUN, THE FOG INVARIABLY RETIRES.



XIV

ISLES OF THE BAY

IN THE BAY OF SAN FRANCISCO ARE SEVERAL ISLANDS, MOSTLY GOVERNMENT RESERVATIONS. THEY PICTURESQUELY SUGGEST MEDITERRANEAN PORTS. ALCATRAZ ISLAND, JUST OPPOSITE THE ENTRANCE OF THE GOLDEN GATE INTO THE BAY, IS NOT LARGE, BUT ITS RUGGED LINES AND STEEP SLOPES SUGGEST THE CHÂTEAU D'IF TO READERS OF DUMAS. HERE IS THE MILITARY PRISON AND A LIGHTHOUSE. YERBA BUENA ISLAND WAS NAMED BY THE SPANIARDS FOR THE "GOOD HERB" WHICH ABOUNDED. A NAVAL TRAINING SCHOOL IS LOCATED HERE. ANGEL ISLAND HOLDS THE QUARANTINE CAMP AND HOSPITAL, AND ALSO FORT M'DOWELL. MARE ISLAND, IN THE NORTHERN PART OF THE BAY, IS THE CHIEF NAVAL STATION OF THE PACIFIC.



FROM STEVENSON'S HOUSE

ROBERT LOUIS STEVENSON HAD MANY ASSOCIATIONS WITH SAN FRANCISCO. IN 1879 HE PASSED SOME DREARY DAYS IN A HOUSE IN BUSH STREET AND ATE FIFTY-CENT DINNERS NEAR-BY, DESCRIBING ONE AS "A COPIOUS MEAL, WITH HALF A BOTTLE OF WINE." IT WAS BUT A FEW SHORT BLOCKS TO PORTSMOUTH SQUARE, WHERE HE LOUNGED IN THE SUN AND LISTENED TO THE TALES OF THE VAGABONDS OF THE SEVEN SEAS. HERE, WHERE HE RECEIVED THE INSPIRATION OF SOME OF HIS LATER TALES, THE FIRST MONUMENT TO HIS MEMORY WAS ERECTED. IN 1888, STEVENSON, WITH HIS FAMILY, SPENT A SHORT TIME AT THE OCCIDENTAL HOTEL IN MONTGOMERY STREET PRIOR TO EMBARKING ON THE CASCO FOR THE SOUTH SEAS.



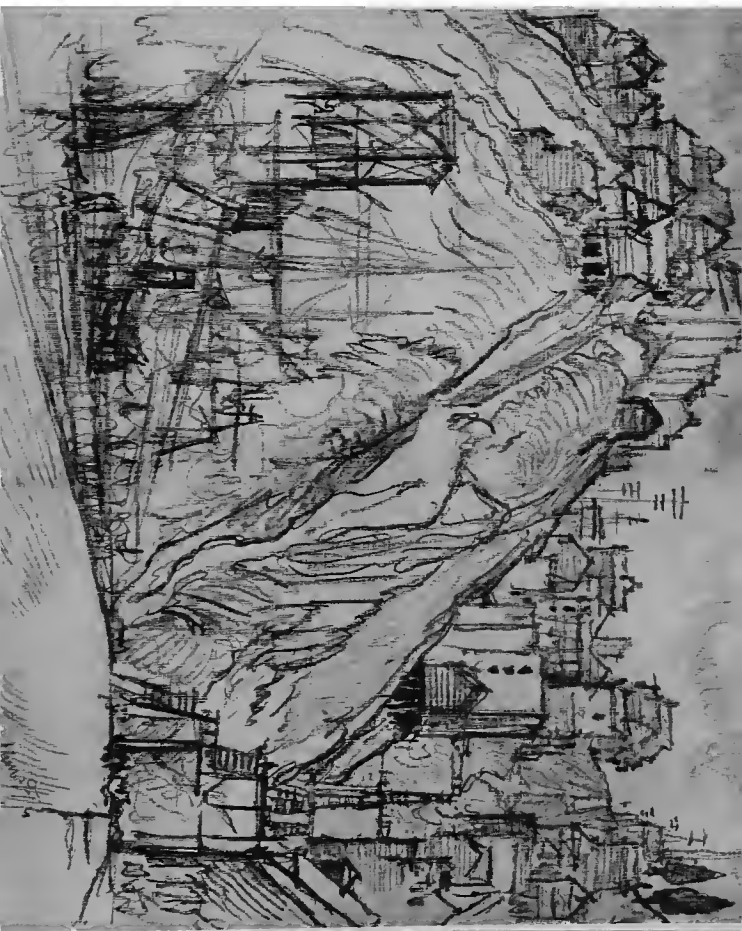
AFTERNOON—SAN FRANCISCO

THE FULL SUNSHINE OF AFTERNOON IRRADIATING THE WHITE BUILDINGS OF THE CITY PRODUCES A FANTASTIC, ARABIAN NIGHTS EFFECT ALMOST DAZZLING IN ITS BRILLIANCY, AS ONE GOES FROM SUN TO SHADOW, UP AND DOWN THE HILLS. THE HILLS OF THE CITY MUST ALWAYS REMAIN, AND ONE OF THE MOST CHARACTERISTIC SIGHTS IS THE CABLE CAR CRAWLING UP THE STEEP INCLINES LIKE A FLY ON A WINDOW PANE.



THE LAST OF OLD SAN FRANCISCO

OLD SAN FRANCISCO AT FIRST PRESENTS A BAMBLING, DISREPUTABLE ASPECT, IN SHARP CONTRAST TO THE RESTORED CITY. THE HILLS WHERE SOME OF THE OLDER CONSTRUCTION REMAINS ARE OFTEN STEEP BEYOND CONCEPTION, AND THE TRAFFIC OF TEAMS IS IMPOSSIBLE. PEOPLE BUILT AS THEY LISTED, WITH LITTLE REGARD FOR STREETS. ON TELEGRAPH HILL, HOUSES HUNG CRAZILY TO THE PRECIPICE-LIKE SIDES, AND STAIRWAYS WERE BUILT UP AND DOWN WITH LITTLE BRIDGES HERE AND THERE TO SPAN THE GULLIES.



XVIII

DOWN & UP THE HILLS TO THE BAY

SAN FRANCISCO LIES MAINLY ON THE SHORE OF THE BAY AND ON THE STEEP HILLS RISING FROM IT. TO MAKE THE PRESENT SITE OF THE CITY SUITABLE FOR AN INCREASING POPULATION, AN IMMENSE AMOUNT OF WORK HAD TO BE DONE IN CUTTING DOWN HILLS AND RIDGES, FILLING UP GULLIES, AND RECLAIMING THE MUD FLATS ON THE BAY.



XIX

THE PLAYGROUND FROM CLIFF HOUSE

SAN FRANCISCO'S GREAT PLAYGROUND IS ALONG THE OCEAN BOULEVARD, WHICH RUNS FOR FIVE MILES PARALLEL WITH THE PACIFIC OCEAN, AND STRETCHES SOUTHWARD TO LAKE MERCED. THE SURF HERE BREAKS ON FIRM SANDS. AT ONE END IS THE CLIFF HOUSE, SUBSTANTIALLY SET INTO THE ROCK, AND OVERLOOKING THE SEAL ROCKS, WHERE THE BIG SEA LIONS GAMBOL IN THE SURF OR SUN THEMSELVES ON THE LEDGES. ON HOLIDAYS THE "BEACH" IS A COMBINATION OF FAMILY RESORT AND GAY PROMENADE. IT IS NEVER DESERTED, DAY OR NIGHT, SUNSHINE OR MOONSHINE.



CALIFORNIA STREET

BEGINNING AT THE FERRY, CALIFORNIA STREET EXTENDS FROM THE WATERFRONT THROUGH THE WHOLESALE AND FINANCIAL DISTRICTS, BY CHINA-TOWN, AND UP THE STEEPEST OF STEEP GRADES TO NOB HILL. THE CABLE CARS CRAWL UP AT ALARMING BUT SAFE INCLINES TO THE SUMMIT WHERE, CROWNING THE ELEVATION, STANDS THE FAIRMONT HOTEL. IT IS AN UNCOMMON PEDESTRIAN WHO WOULD CHOOSE THE STEEP GRADE OF CALIFORNIA STREET FOR PLEASURE.



KEARNY STREET

KEARNY STREET LEADS FROM MARKET STREET TOWARD TELEGRAPH HILL. IT HAS ITS DISTINCTIVE CHARACTER. THE LIFE OF THE STREET IS APART FROM THE MORE STAID AND REGULAR LIFE OF SAN FRANCISCO. PICTURESQUE FROM LONG VOYAGING, THE WATERFRONT DRIFTERS WANDER ALONG THE THOROUGHFARE SEEKING ADVENTURE. WHERE THE STREET MERGES INTO CHINATOWN AND THE LATIN QUARTER IS PORTSMOUTH SQUARE. AN EXILED CALIFORNIAN, QUOTED BY WILL IRWIN, HAS SAID, "IN HALF AN HOUR OF KEARNY STREET I COULD RAISE A DOZEN MEN FOR ANY WILD ADVENTURE, FROM PULLING DOWN A STATUE TO SEARCHING FOR THE COCOS ISLAND TREASURE."



FROM THE BAY

OF SAN FRANCISCO, JAMES BRYCE, LATE AMBASSADOR FROM GREAT BRITAIN, SAYS : " FEW CITIES IN THE WORLD CAN VIE WITH SAN FRANCISCO EITHER IN THE BEAUTY OR IN THE NATURAL ADVANTAGES OF HER SITUATION ; INDEED THERE ARE ONLY TWO PLACES IN EUROPE, CONSTANTINOPLE AND GIBRALTAR, THAT COMBINE AN EQUALLY PERFECT LANDSCAPE WITH WHAT MAY BE CALLED AN EQUALLY IMPERIAL POSITION. THE CITY ITSELF IS FULL OF BOLD HILLS, RISING STEEPLY FROM THE DEEP WATER. THE AIR IS KEEN AND DRY AND BRIGHT LIKE THE AIR OF GREECE AND THE WATERS NOT LESS BLUE. PERHAPS IT IS THIS LIGHT AND AIR, RECALLING THE CITIES OF THE MEDITERRANEAN, THAT MAKES ONE INVOLUNTARILY LOOK UP TO THE TOPS OF THOSE HILLS FOR THE FEUDAL CASTLE, OR THE RUINS OF THE ACROPOLIS THAT MUST CROWN THEM."



FROM MOUNT TAMALPAIS

MOUNT TAMALPAIS, ACROSS THE GLEAMING BAY, IS COVERED WITH CHARACTERISTIC CALIFORNIAN VERDURE, MADRONA AND OAK, LAUREL AND PINE, MANZANITA AND CHAPARRAL, WITH MUCH LOWER GROWTH OF FLOWER AND FERN. HALF-WAY UP IS A FINE GROVE OF REDWOODS, NAMED AFTER JOHN MUIR, AUTHOR-NATURALIST, AND RECENTLY GIVEN TO THE FEDERAL GOVERNMENT AS A FOREST RESERVE. MOUNT TAMALPAIS AND THE MOUNTAINOUS COUNTRY TO THE SOUTH BRING THE REAL FOREST CLOSER TO SAN FRANCISCO THAN TO ANY OTHER AMERICAN CITY. UP THE MOUNTAIN WINDS "THE CROOKEDEST RAILWAY IN THE WORLD." FROM ITS SUMMIT IS A PANORAMA OF SEA AND BAY, MOUNTAIN AND SHORE, WITH SAN FRANCISCO AND HER SISTER CITIES IN PLAIN VIEW.



SACRAMENTO STREET

SACRAMENTO STREET IS ONE OF THE IMPORTANT THOROUGHFARES OF SAN FRANCISCO. IT RUNS WESTWARD FROM THE FERRY, PASSING THROUGH CHINA-TOWN PARALLEL WITH CALIFORNIA STREET. IT HAS SOME OF THE STEEP GRADES OF THAT HILLY CLIMB, AS IT RISES TO THE BETTER RESIDENTIAL SECTIONS. THE SACRAMENTO STREET CAR LINE MAY BE TAKEN AT THE FERRY BUILDING. FROM THE WESTERN DISTRICT OF THE CITY IT RETURNS ON CLAY STREET AND PASSES PORTSMOUTH SQUARE.



THE CITIES SERIES

*A brilliant series of drawings by eminent artists, with illustrations
in photogravure and gravure-tint, mounted*

A LITTLE BOOK OF LONDON

25 drawings in photogravure by JOSEPH PENNELL. In decorative covers, net 50 cents. In Japanese vellum with illustrations mounted, net \$1.00

THE GREAT NEW YORK

24 drawings in photogravure by JOSEPH PENNELL. In decorative covers, net 50 cents. In Japanese vellum with illustrations mounted, net \$1.00

GLASGOW, THE CITY OF THE WEST

24 drawings in photogravure of Old Glasgow by JESSIE M. KING. In decorative covers, net 50 cents

EDINBURGH, THE GREY CITY OF THE NORTH

24 drawings of Old Edinburgh by JESSIE M. KING. In decorative covers, net 50 cents

DWELLINGS OF AN OLD-WORLD TOWN IN FIFE-SHIRE

26 drawings by JESSIE M. KING. In decorative covers, net 50 cents

SAN FRANCISCO, THE CITY BY THE GOLDEN GATE

24 drawings in photogravure by JOSEPH PENNELL. In decorative covers, net 75 cents

VENICE, THE CITY OF THE DOGES

24 drawings in photogravure by JOSEPH PENNELL. In decorative covers, net 75 cents

Uniform with the above series

R. L. STEVENSON : MEMORIES

Being twenty-five illustrations, reproduced from photographs, of Robert Louis Stevenson, his homes and his haunts. Many of these reproduced for the first time. A booklet for every Stevenson lover. In decorative covers, net 50 cents

LE ROY PHILLIPS, PUBLISHER

29A BEACON STREET, BOSTON

FRIENDSHIP BOOKS

Printed in two colors, and in attractive bindings, net \$1.00.

Bound in finest Velvet Persian, net \$1.50

An attempt has been made in these books to issue at the lowest possible price, with the aid of the latest modern processes of color reproduction, a finely produced series, sumptuously decorated and illustrated, so as to form attractive presentation books

RUBÁIYÁT OF OMAR KHAYYÁM

With illustrations in color by F. BRANGWYN

THE GIFT OF FRIENDSHIP

With illustrations in color by H. C. PRESTON MACGOUN

THE GIFT OF LOVE

A collection of the noblest passages in literature dealing with love selected by A. H. HYATT. With illustrations in color by LEWIS BAUMER

SAPPHO, QUEEN OF SONG

A selection from her love poems by J. R. TUTIN, with illustrations in color by E. H. R. COLLINGS

AUCASSIN AND NICOLETTE

With introduction by F. W. BOURDILLON, and illustrations in color by MARJORIE NASH

THE CHARM OF LIFE

With illustrations in color by FREDERICK GARDNER

THE BOOK OF GOOD FRIENDSHIP

With illustrations in color by H. C. PRESTON MACGOUN

THE GARDEN LOVER'S BOOKS

In attractive bindings, net \$1.00. Bound in finest Velvet Persian, net \$1.50

The latest modern processes of color reproduction have been employed in illustrating and decorating this series

A BOOK OF GARDENS

Illustrated in color by MARGARET H. WATERFIELD

A BOOK OF OLD-WORLD GARDENS

Illustrated in color by BEATRICE PARSONS

GARDEN MEMORIES

Illus. in color by MARY G. W. WILSON

LE ROY PHILLIPS, PUBLISHER

29A BEACON STREET, BOSTON

